



MKH 20-P48

Quick Guide
 Kurzanleitung
 Guide de démarrage rapide
 Guida rapida
 Instrucciones resumidas
 Instruções resumidas
 Beknopte gebruiksaanwijzing
 Krótka instrukcja obsługi
 Snabbguide

Kort vejledning
 Pikaohje
 Γρήγορος οδηγός
 Kısa Kılavuz
 Краткая инструкция
 快速指南
 快速使用指南
 クイックガイド
 퀵 가이드

SENNHEISER



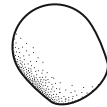
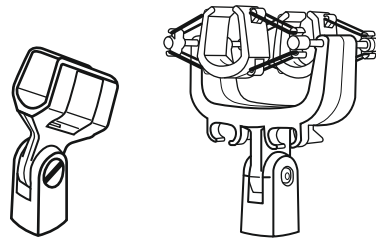
Online at
www.sennheiser.com/download
 Q MKH 20-P48_

Sennheiser electronic GmbH & Co. KG

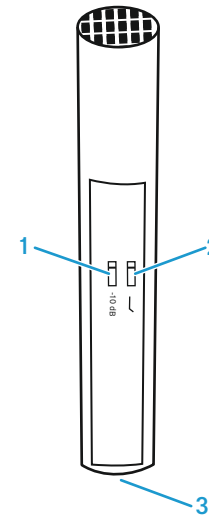
Am Labor 1, 30900 Wedemark, Germany
www.sennheiser.com

Printed in Germany, Publ. 09/19, 583986/A01

In the box

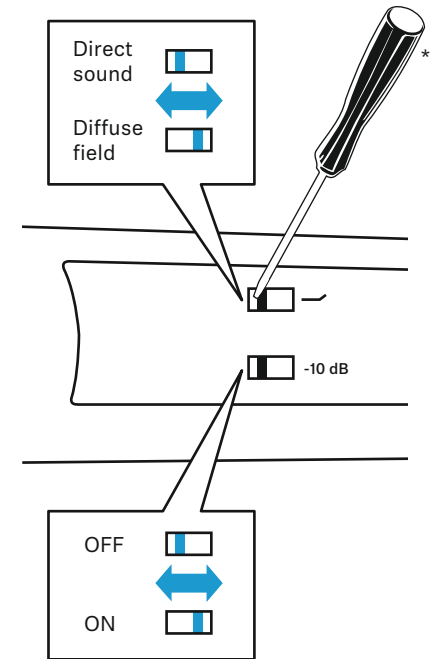


Overview

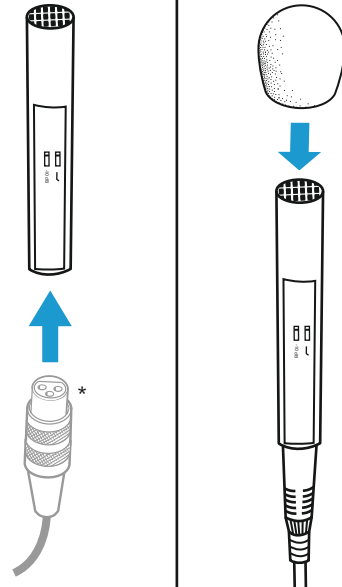


- 1 switch for preattenuation
- 2 switch for diffuse-field equalization **Adjusting**
- 3 XLR-3 connector

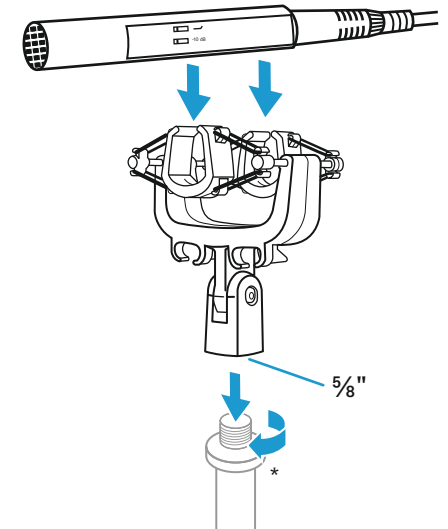
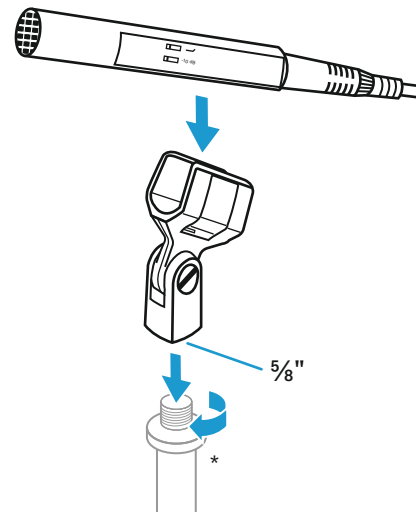
Adjusting



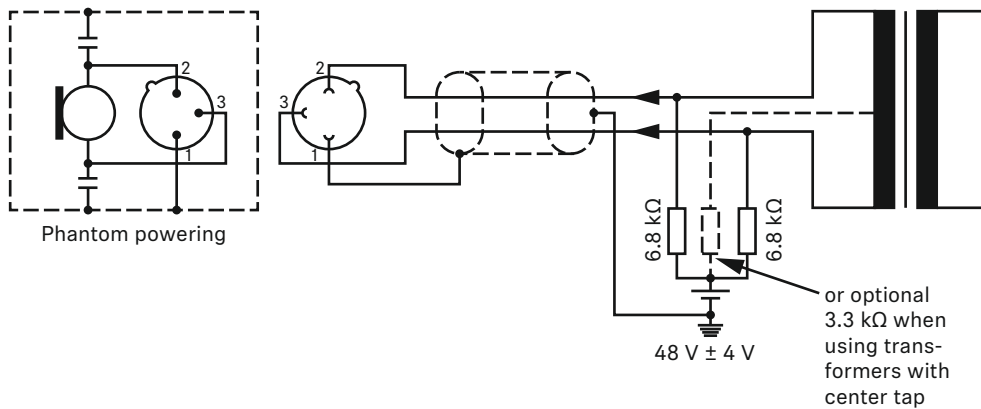
Setup



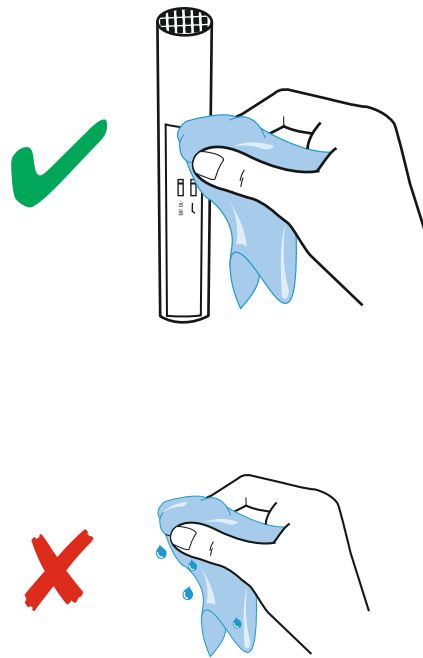
* not included



Power supply and connections

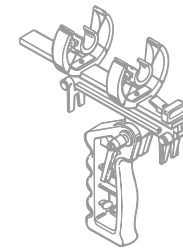


Cleaning

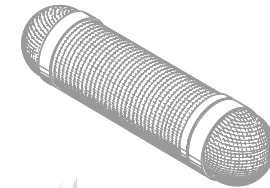


Accessories

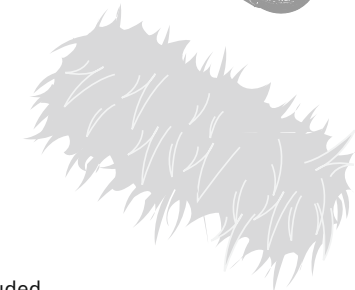
MZS 20-1*



MZS 20-1*



MZH 20-1*



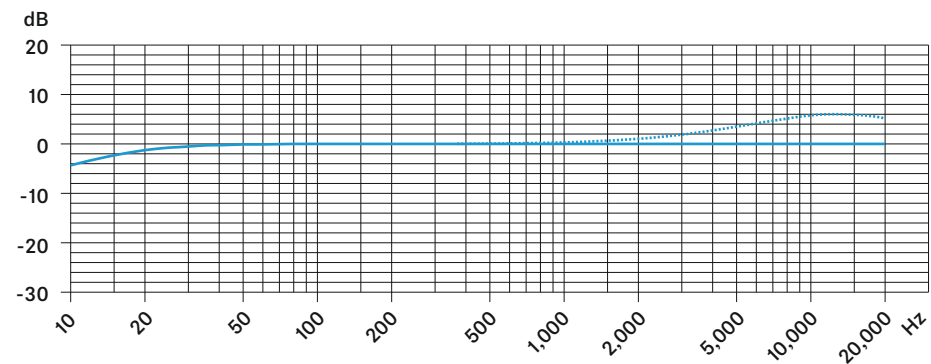
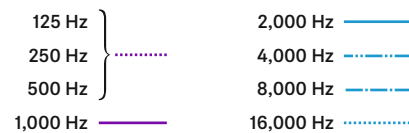
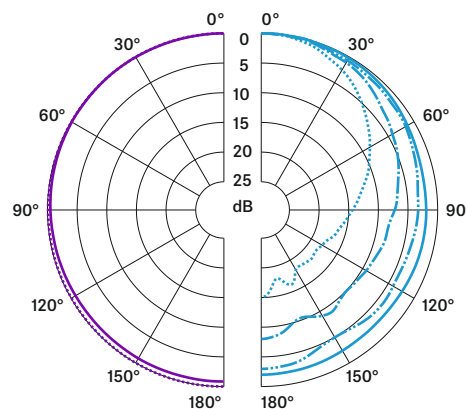
* not included

Specifications

Pick-up pattern	omni-directional
Frequency response	12 - 20,000 Hz
Sensitivity (free field, no load, 1 kHz)	25 (8) mV/Pa \pm 1 dB
Max. SPL	134 (142) dB / 1 kHz
Equivalent noise level	
DIN IEC 651	10 (18) dB(A)
CCIR 468-3	20 (28) dB
Nominal impedance	150 Ω
Min. terminating impedance	1 k Ω
Phantom powering	48 V \pm 4 V
Current consumption	2 mA
Dimension	\varnothing 25 x 153 mm
Weight	approx. 100 g

Values in () with attenuator switched on (-10 dB)

Polar pattern and frequency response



· · · · · Effect of diffuse-field correction

