



HD 25 | HD 25 Plus



www.sennheiser.com/download

Quick Guide
 Kurzanleitung
 Guide de démarrage rapide
 Guía rápida
 Instrucciones resumidas
 Instruções resumidas
 Beknopte gebruiksaanwijzing
 Krótka instrukcja obsługi
 Snabbguide

Kort vejledning
 Pikaohje
 Σύντομες οδηγίες
 Kısa Kılavuz
 Краткая инструкция
 快速指南
 快速使用指南
 クイックガイド
 요약 안내서

Sennheiser electronic SE & Co. KG

Am Labor 1, 30900 Wedemark, Germany
www.sennheiser.com

Printed in Germany
Publ. 12/24, 402230/A01

SENNHEISER

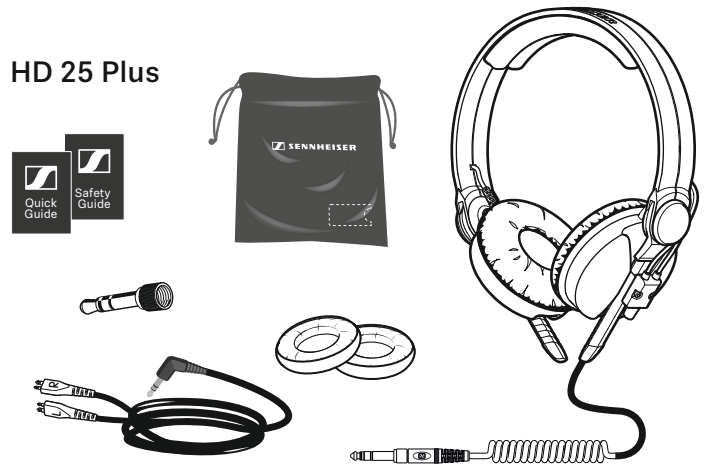
In the box

HD 25

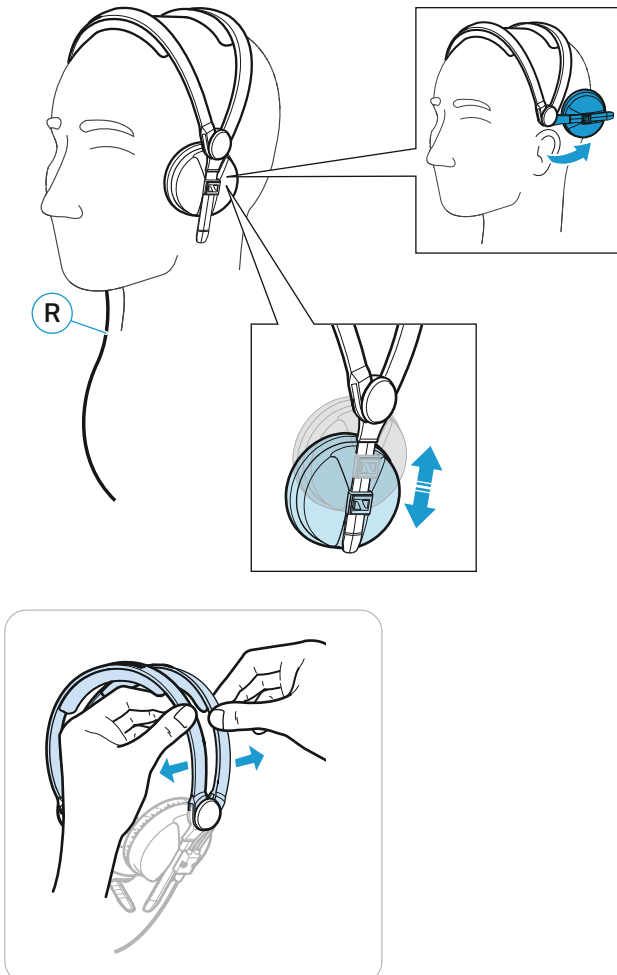


◀ OR ▶

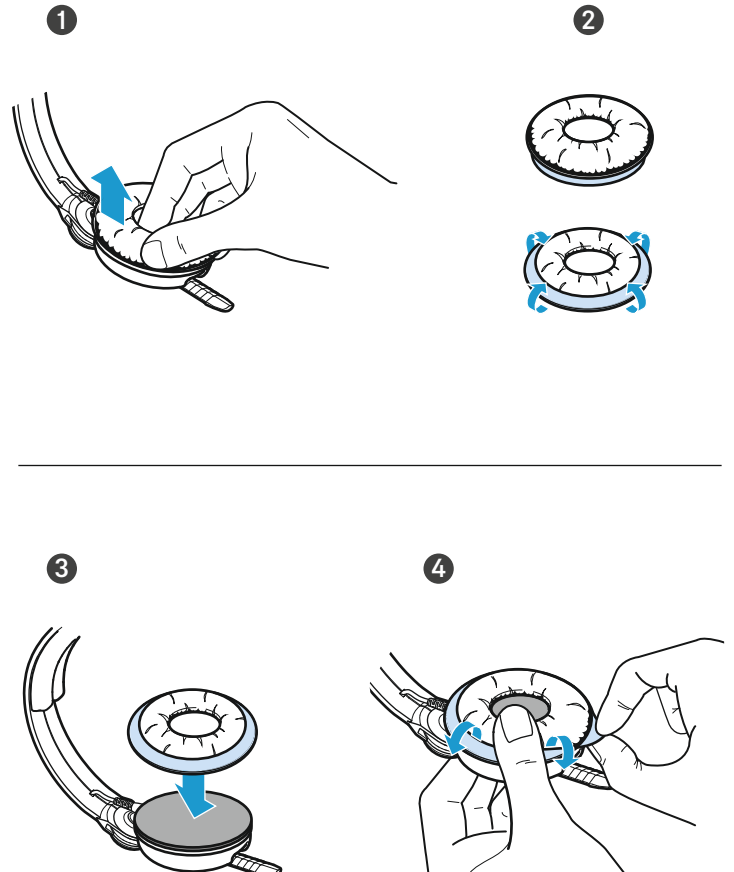
HD 25 Plus



Wearing the headset



Changing ear cushion

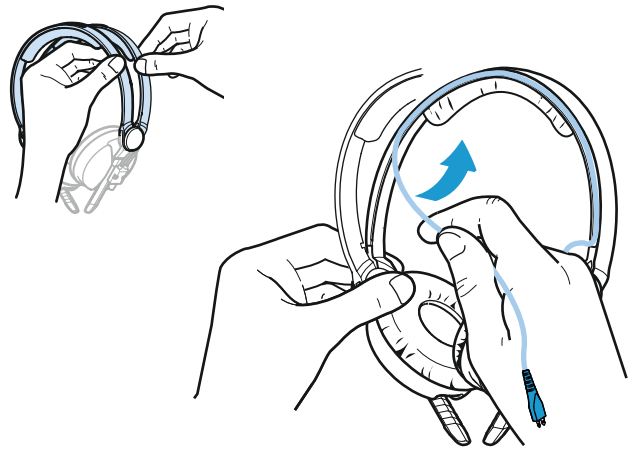


Changing the cable

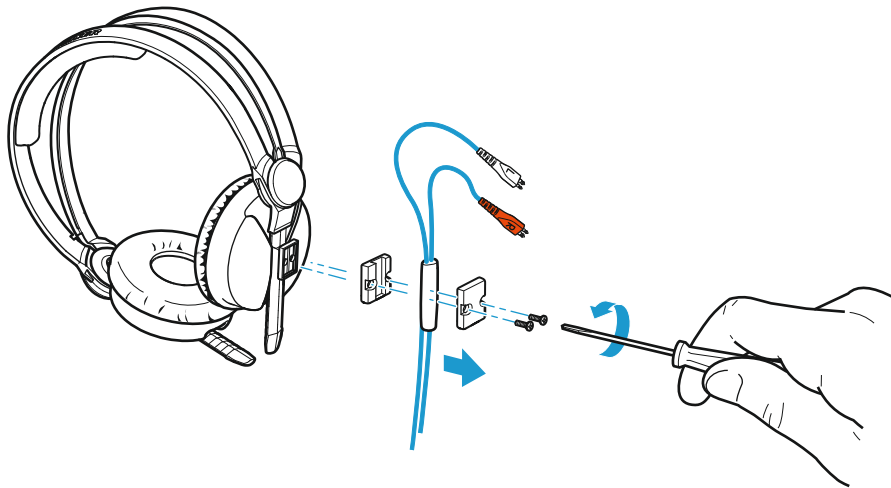
1



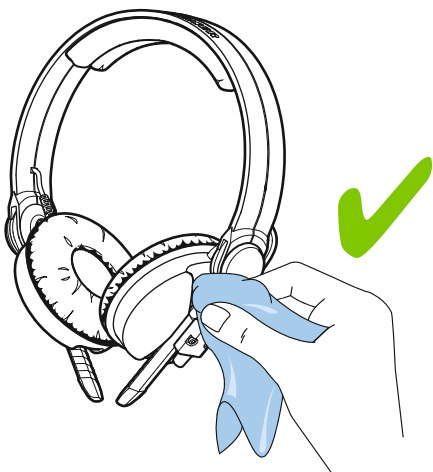
2



3



Cleaning



Specifications

Transducer principle	dynamic, closed
Ear coupling	supraaural
Frequency response	16 – 22,000 Hz
Nominal impedance	70 Ω
Load rating	200 mW
Max. SPL	120 dB
THD	< 0.3% @ 1 kHz
Contact pressure	approx. 2.5 N
Weight (without cable)	approx. 140 g
Cable length	HD 25 approx. 1.5 m HD 25 PLUS approx. 1 - 3 m